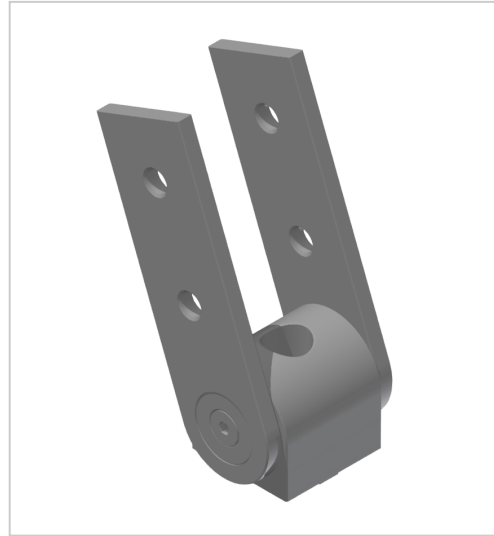


# Pivot Joint 40x40, white aluminium-10

**Product number** VB-3260

**Weight** 0.255kg



## Product description

Support arm joints are suitable for connecting profiles in a free angle. They can also be used as heavy hinges. The joints are freely movable. Tightening the clamping screws creates a rigid angle element. The fixings enable a twist-proof attachment to the profile groove.

## Product properties

<b>Part type</b>	Joints
<b>Modular dimension</b>	Modular dimension 40
<b>Series</b>	Series 10
<b>Size</b>	40x40 mm
<b>Connector type</b>	Hinges
<b>Colour</b>	white aluminium

## More images

