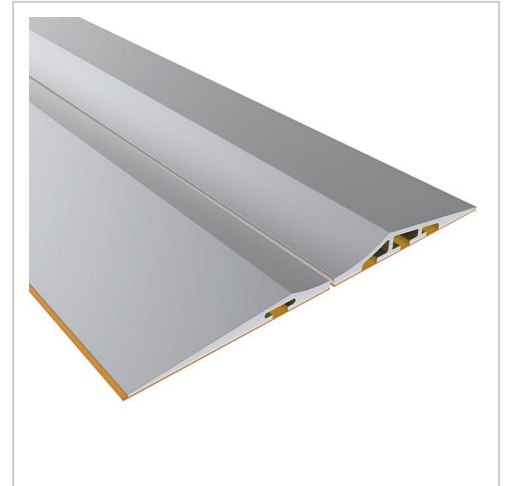


# Parking rail flat-high | 800 mm

Parkschiene flach-hoch 800 mm-Set kaufen ? Jetzt sparen in unserem Onlineshop ?!

**Product number** LN-1022

**Weight** 1.12kg



## Product description

**Discover Our Flat-High Parking Rails Set – The Ideal Solution for Efficient and Flexible Warehouse Organization**

This set allows you to **clearly define storage spaces**, optimizing workflows and improving warehouse efficiency.

### Key Features:

- ? **Robust Construction:** Made from **high-quality materials**, ensuring **durability and stability** for daily use.
- ? **Easy Installation:** Thoughtfully designed for **quick and hassle-free** mounting, saving **time and effort**.
- ? **Flexibility:** With a length of **2400 mm**, these rails are **suitable for various applications** and can be customized as needed.
- ? **Complete Set:** Includes **all necessary components** for immediate implementation in your warehouse.

### Competitive Advantage:

Compared to similar competitor products, our **flat-high parking rails** offer **equivalent quality at a more attractive price**. They are **structurally identical but more cost-effective**, helping you **maximize your budget**.

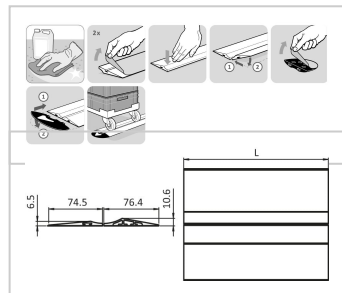
### Optimize Your Warehouse Logistics

Upgrade your storage system with our **flat-high parking rails set** and benefit from a **cost-efficient solution** without compromising **quality or functionality**.

## Product properties

**Part type** Parking rails

## More images



**LOW – HIGH:**  
For medium to heavy weights

*FLACH – HOCH:*  
Für mittlere bis schwere Gewichte

