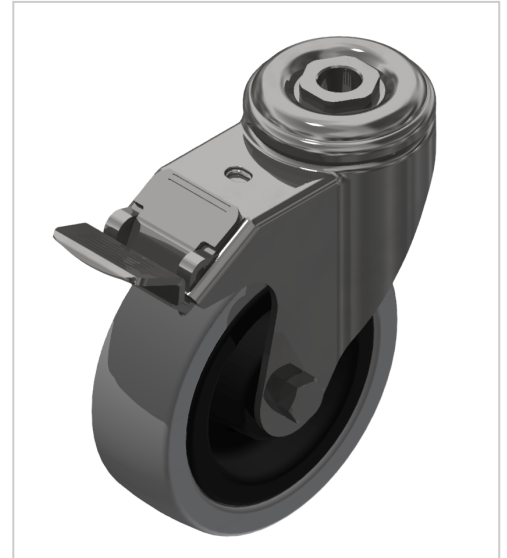


# Castor D100 swivel with double-brake, bright zinc-plated-8

Lenkrolle D100 Doppelfeststeller kaufen ? – 0.0.602.40 kompatibel mit Aluprofilen.  
Jetzt sparen in unserem Onlineshop ?!

**Product number** ZI-1519

**Weight** 0.74kg



## Product description

Swivel and fixed castors are used on assemblies and frames of all kinds. They have very good rolling characteristics and are highly resilient. The castors are resistant to many environmental influences. Especially for use in electrical production, many castors are also available in ESD versions. The ESD version has a discharge resistance of 110 Ohm.

## Product properties

<b>Roll type</b>	Swivel castor with double brakes
<b>Mounting type</b>	Back hole
<b>Compatible with</b>	item
<b>Part type</b>	Apparatus castors
<b>Roller diameter</b>	Ø 100 mm
<b>Series</b>	Series 8
<b>Load capacity</b>	110 kg

## More images

