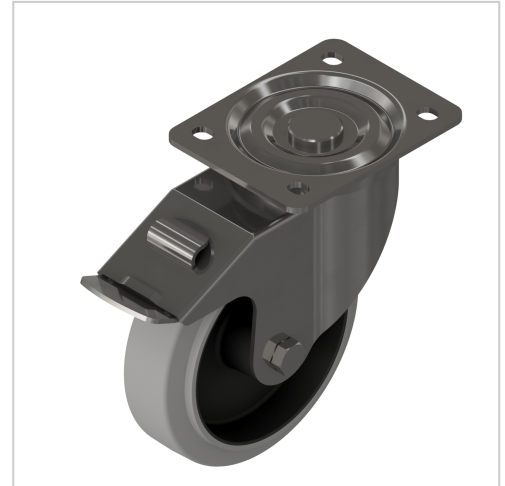


Castor D160 swivel with double-brake antistatic 140x110, bright zinc-plated

Lenkrolle D160 Doppelfeststeller 140x110 ESD, verzinkt kaufen ? Jetzt sparen in unserem Onlineshop ?!

Product number ZI-1731

Weight 2.6kg



Product description

Swivel and fixed castors are used on assemblies and frames of all kinds. They have very good rolling characteristics and are highly resilient. The castors are resistant to many environmental influences. Especially for use in electrical production, many castors are also available in ESD versions. The ESD version has a discharge resistance of 110 Ohm. Compatible with item 0.0.667.32

Product properties

Roll type	Swivel castor with double brakes
Mounting type	Screw-on plate
Compatible with	item
Part type	Apparatus castors
Roller diameter	Ø 160 mm
Series	Series 8
Colour	ESD
Load capacity	320 kg
ESD discharging	Yes

More images

