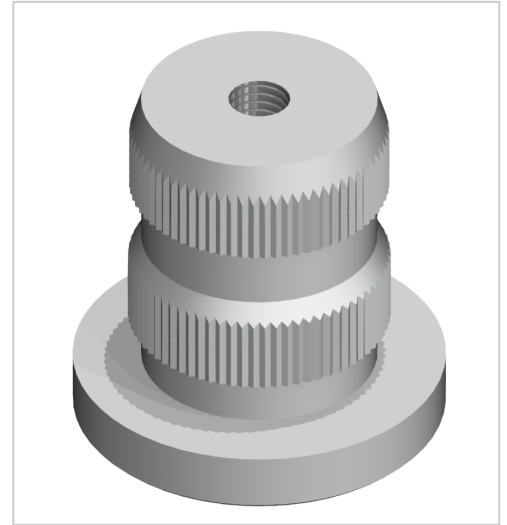


# Threaded Insert, Profile Tube D30 M6 Al, natural

Gewindeinsatz Profilrohr D30 M6 Al, natur kaufen ☐ - 0.0.675.16 kompatibel mit Aluprofilen. Jetzt sparen in unserem Onlineshop ☐ !

**Product number** ZL-1900

**Weight** 0.03kg



## Product description

The threaded plug is inserted into the front of the tube. Adjustable feet can then be attached.

## Product properties

<b>Compatible with</b>	item
<b>Series</b>	i- LPS Lean Production
<b>Part type</b>	Threaded inserts profile tube
<b>Colour</b>	Alu natural
<b>Material</b>	GD-Al, natur
<b>Lean system type</b>	D30 Aluminium i kit system

## More images

