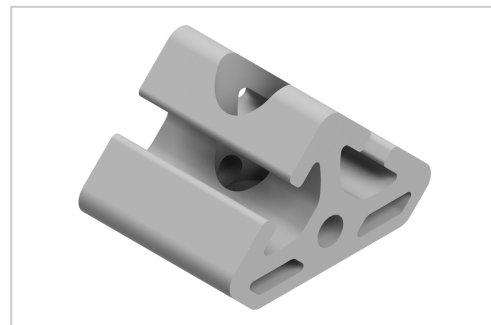


Angle Element 8 T2-40, natural

Winkelement 8 T2-40, natur kaufen ? – 0.0.388.02 kompatibel mit Aluprofilen. Jetzt sparen in unserem Onlineshop ?!

Product number ZI-1355

Weight 0.067kg



Product description

Angle elements are used to attach two profiles at an angle of 45° and to construct nodes and trusses.

Product properties

| | |
|------------------------|------------------|
| Compatible with | item |
| Part type | Angle elements |
| Material | Al |
| Connector type | Angle elements |
| Series | Series 8 |
| Colour | natural anodized |

More images

