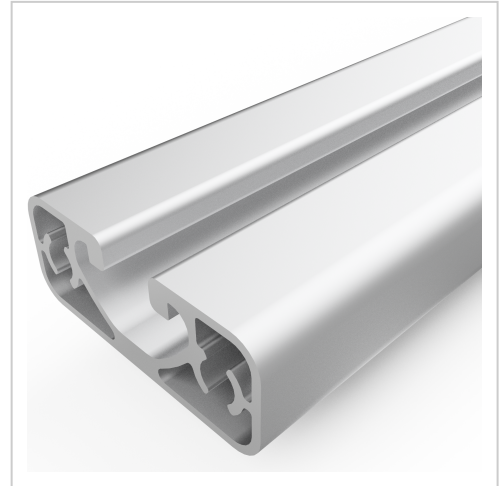


Profile 10 50x20 E, natural | 6000 mm bar

Product number PI-7010 SN6000
Weight 5.94kg
Length 6000mm



Product description

The profiles 10 E are suitable for weight-optimized assemblies of all kinds. Due to the different profile geometries, the material requirements can be adapted to the application. The grooves and the core holes of the profiles 10 E are designed for M10 screws.

Delivery length 6030 mm

Product properties

Material	Al Mg Si 0.5 F25, artificially aged
Anodised	E6EV1 10-15 µm silver
Tolerances	EN 12020-2
Compatible with	item
Nutauszugskraft	F=3.500 N
Breite Profil	50 mm
Höhe Profil	20 mm
Groove shape	Open grooves
Delivery unit	Rods
Profile length	6000 mm bar
Series	Series 10
Contour	Rectangular
Colour	natural
Execution	economy
Size	50x20 mm

More images

