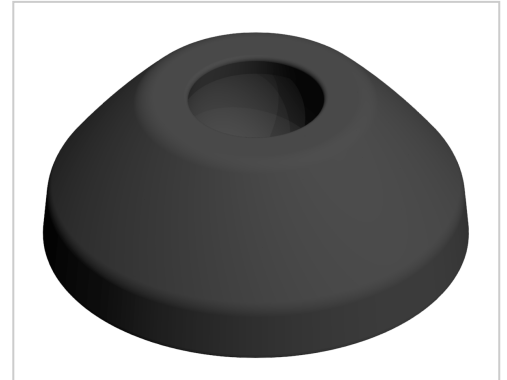


Base A D45 PA, black

Teller A D45 PA, schwarz kaufen ☐ - 3 842 538 834 kompatibel mit Bosch-Geräten. Jetzt sparen in unserem Onlineshop ☐ !

Product number ZB-3195

Weight 0.013kg



Product description

The combination of a threaded rod and a swivel foot plate gives a complete adjustable foot. Leveling feet serve as any type stepless height and level adjustment of modules and racks. The tilt of the plate is variable. Optionally, a rubber insert can be installed.

Product properties

Compatible with	Bosch
Part type	levelling feet
Colour	black
Series	Series 60-10, Series 45-10, Series 50-10, Series 40-10, Series 30 8, Series 20-6
Base for swivel feet Ø	45 mm
Type	A
Execution	PA

More images

