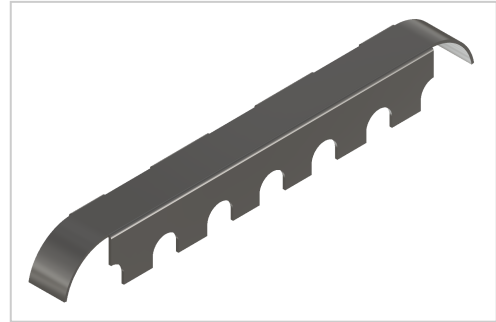


# Brake H26, stainless - Alu

Bremse H26, Edelstahl - Alu kaufen ? Jetzt sparen in unserem Onlineshop ?!

**Product number** ZL-1170

**Weight** 0.018kg



## Product description

The brake is attached to the D28 roller inserts,  
It stops workpieces or containers at a defined position.

## Product properties

<b>Compatible with</b>	item , Bosch
<b>Series</b>	i- LPS Lean Production, B- LPS Lean Production
<b>Part type</b>	Roller conveyor accessories
<b>Lean system type</b>	D28 steel kit system, D28 Aluminium B kit system
<b>Colour</b>	stainless steel



