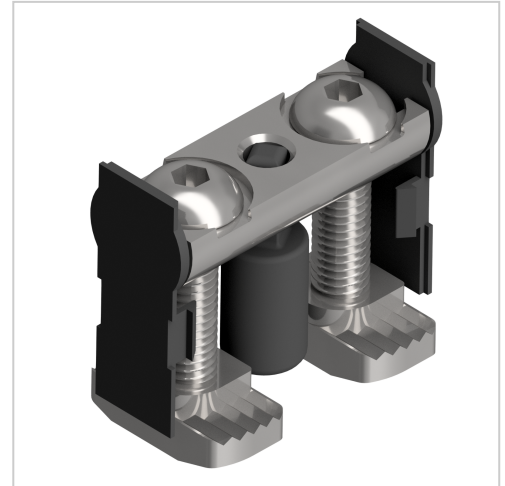


# Bolt Connector Set 30, bright zinc-plated-8

Bolzenverbindersatz 30, verzinkt-8 kaufen ? – 3 842 535 624 kompatibel mit Bosch-Geräten. Jetzt sparen in unserem Onlineshop ?!

**Product number** VB-2010

**Weight** 0.026kg



## Product description

The pin connector is used for connecting two rectangular profiles. It is designed for very high loads, even for torsion suitable. The shoring in already assembled components is possible.

## Product properties

<b>Profile processing</b>	1x hole
<b>Torque limitation</b>	$F \times l < 60 \text{ Nm}$
<b>Force limitation</b>	$F < 2.500 \text{ N}$
<b>Compatible with</b>	Bosch
<b>Part type</b>	Connector
<b>Connector type</b>	Bolt connector
<b>ESD discharging</b>	Yes
<b>Series</b>	Series 30 8
<b>Material</b>	Galvanized steel

## More images

