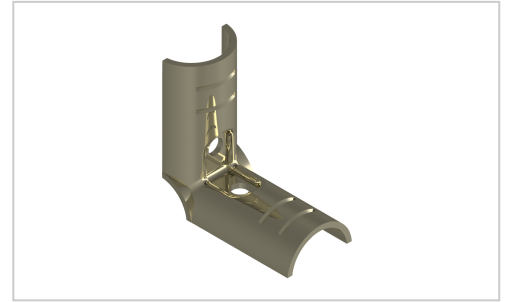


Basic Connector Corner Inside | ESD

Grundverbinder in Eckform Innenschale, vernickelt kaufen ? Jetzt sparen in unserem Onlineshop ?!

Product number G-2S-Ni

Weight 0.095kg



Product description

Clamp connector made of steel for the assembly of stable pipe push-in clamp connections.

Product properties

Compatible with	Beewatec
Series	S- LPS Lean Production
Lean system type	D28 steel kit system
Connector type	Basic connector

More images

