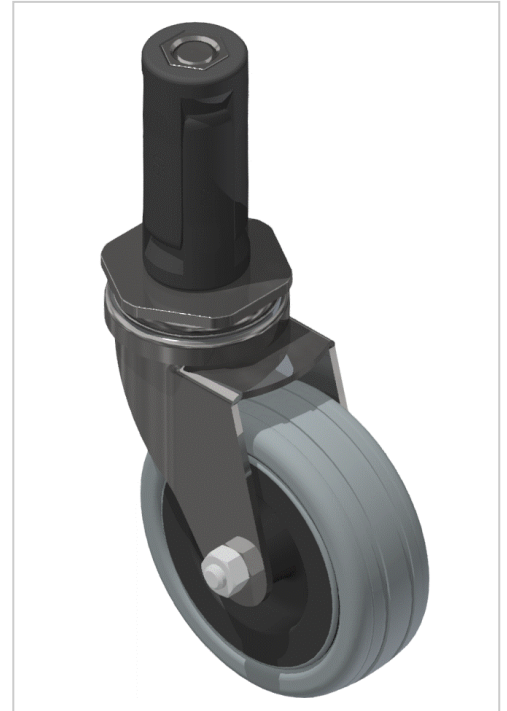


Castor D75 swivel plug-in Pin, bright zinc-plated

Lenkrolle D75 Steckzapfen, verzinkt kaufen ? Jetzt sparen in unserem Onlineshop ?!

Product number M-109

Weight 0.31kg



Product description

Swivel and fixed castors are used on assemblies and frames of all kinds. They have very good rolling characteristics and are highly resilient. The castors are resistant to many environmental influences.

Product properties

Roll type	Swivel castor
Mounting type	Tenon
Part type	Apparatus castors
Roller diameter	Ø 75 mm
Lean system type	D28 steel kit system
Load capacity	60 kg

More images



