

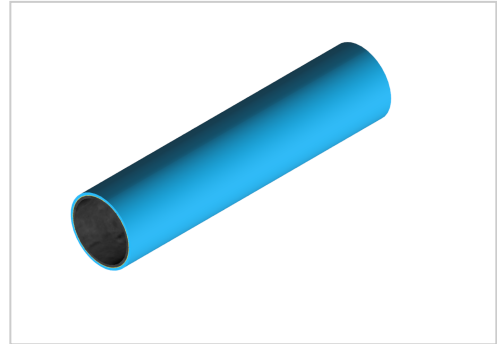
# M-Tube 1 mm sky blue | 4000 mm bar

D-Coat-Rohr 1 mm himmelblau kaufen ? Jetzt sparen in unserem Onlineshop ?!

**Product number** PL-2031 SN4000

**Weight** 2.787kg

**Length** 4000mm



## Product description

The M-tube with a wall thickness of 1mm is used in conjunction with our connectors to build specific solutions such as workstations, transport trolleys, shelving systems.

Due to the 2 mm wall thickness, stability has a name.

With this stable wall you can solve even the most difficult problems in your production...

Our M-tubes are characterised by quality and stability.

The following features are due to the structure of the M-pipe.

Inner coating as corrosion protection.

Stable steel core.

Full-surface adhesive layer.

Full-surface synthetic resin layer.

This quality in the pipe structure leads to the positive properties such as

Heat resistance 100°C.

Cold resistance -20°C.

Highly resistant to oil and chemicals.

Translated with [www.DeepL.com/Translator](http://www.DeepL.com/Translator) (free version)

## Product properties

<b>Compatible with</b>	Beewatec
<b>Series</b>	S- LPS Lean Production
<b>Profile length</b>	4000 mm bar
<b>Part type</b>	Tubes D28 steel
<b>Delivery unit</b>	Rods
<b>Lean system type</b>	D28 steel kit system
<b>Colour</b>	sky blue

## More images

