

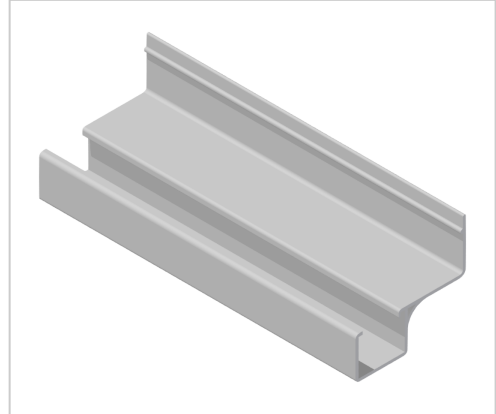
Roller Conveyor Guide Rail wide D28 St

Seitenführung breit-D28 St kaufen ? Jetzt sparen in unserem Onlineshop ?!

Product number PL-1035 SN4000

Weight 3.36kg

Length 4000mm



Product description

Side guides with their extension arm offer the possibility of an optimal use of space on the outer sides of the frame. The guides are clipped on without any additional connecti

Product properties

Compatible with	Bosch, Beewatec
Series	B- LPS Lean Production, S- LPS Lean Production
Part type	Roller conveyor guides
Delivery unit	Rods
Colour	grey
Lean system type	D28 steel kit system, D28 Aluminium B kit system

More images

