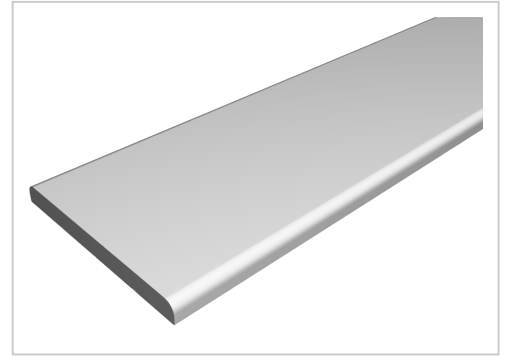


# Profile M 80x8 E, natural | Cut length

Profil M 80x8 E, natur kaufen [👉](#) Jetzt sparen in unserem Onlineshop [👉](#) !

**Product number** PI-1540 SZ

**Weight** 1.7kg



## Product description

Angle and flat profiles can be used in a variety of ways, e.g. for edging panel elements, as end or support strips, etc.

Cut to size max. 2000 mm

Compatible with item 7.0.001.22

## Product properties

|                        |                                     |
|------------------------|-------------------------------------|
| <b>Size</b>            | 80x8 mm                             |
| <b>Material</b>        | Al Mg Si 0.5 F25, artificially aged |
| <b>Anodised</b>        | E6EV1 10-15 µm silver               |
| <b>Tolerances</b>      | EN 12020-2                          |
| <b>Compatible with</b> | item                                |
| <b>Breite Profil</b>   | 80 mm                               |
| <b>Höhe Profil</b>     | 8 mm                                |
| <b>Profile length</b>  | Cut length                          |
| <b>Series</b>          | Series 8                            |
| <b>Delivery unit</b>   | Cuts                                |
| <b>Contour</b>         | Rectangular                         |
| <b>Groove shape</b>    | 4 sides closed                      |
| <b>Colour</b>          | natural                             |
| <b>Execution</b>       | economy                             |

## More images

