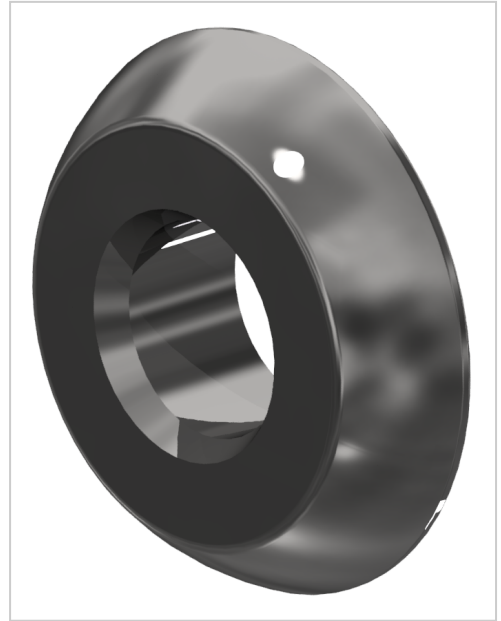


# Locating Washer 8 D6, bright zinc-plated

**Product number** ZI-2000

**Weight** 0.004kg



## Product description

The grooved washer is used to fasten various components with concealed screw heads in the profile groove.

## Product properties

<b>Compatible with</b>	item
<b>Part type</b>	Handles
<b>Handle Type</b>	Handle AI
<b>Series</b>	Series 8
<b>Colour</b>	galvanized
<b>Material</b>	Galvanized steel

## More images

