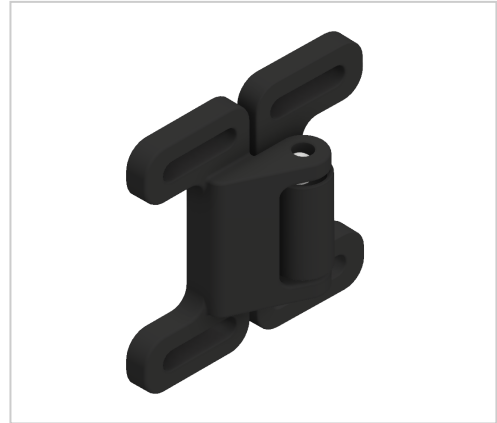


Double Ball Catch-8

Doppel-Kugelschnäpper 8 PA kaufen ? Jetzt sparen in unserem Onlineshop ?!

Product number ZI-1618

Weight 0.038kg



Product description

Double ball catches are used for the guard locking of swing and sliding doors. Quick installation is possible due to slotted holes. M5 screws and sliding blocks are required for fastening.

Product properties

Compatible with item

Part type Door stops

Colour black

Series Series 8

More images

