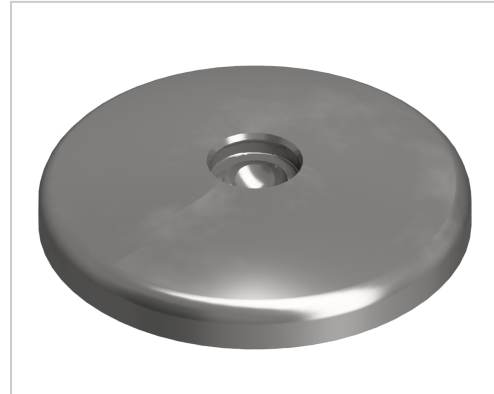


## Base A D100, stainless

Teller A D100, Edelstahl kaufen ? Jetzt sparen in unserem Onlineshop ?!

**Product number** ZB-3222

**Weight** 0.605kg



### Product description

The combination of a threaded rod and a base plate results in a complete base. Adjusting feet serve as a stepless height and level equalization of assemblies and reeds of any kind. The inclination of the plate is variable. Optionally, a rubber insert can be installed.

### Product properties

<b>Compatible with</b>	Bosch
<b>Part type</b>	levelling feet
<b>Series</b>	Series 60-10, Series 45-10, Series 50-10, Series 40-10, Series 30 8, Series 20-6
<b>Base for swivel feet Ø</b>	100 mm
<b>Type</b>	A
<b>Execution</b>	stainless steel

## More images

