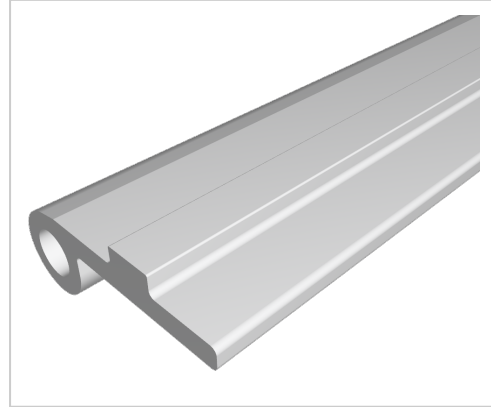


Hinge Leaf Profile V8 e light natural

Product number PI-1146 SN3000
Weight 2.13kg
Length 3000mm



Product description

With the hinge flap profiles and the bolt set AI, variably designed hinges are realised. These are adapted to individual requirements.

Product properties

Material Al Mg Si 0.5 F25, artificially aged, Al
Anodised E6EV1 10-15 µm silver
Tolerances EN 12020-2
Part type Hinges
Delivery unit Rods
Series Series 8
Contour Rectangular
Profile length 3000 mm bar
Colour natural anodized
Hinge Type Hinge AI

More images

