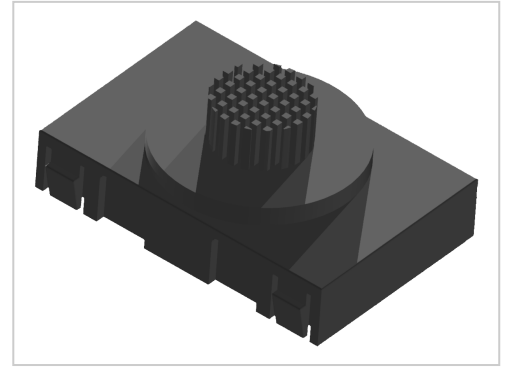


# Brush Unit ESD, black - Alu

Bürsteneinsatz ESD kaufen ? – 0.0.622.22 kompatibel mit Aluprofilen. Jetzt sparen in unserem Onlineshop ?!

**Product number** ZL-1130

**Weight** 0.015kg



## Product description

The ESD brush element is equipped with flexible brush fibres. These allow parts that are sensitive to scratches to glide gently.

## Product properties

**Series** i- LPS Lean Production, B- LPS Lean Production

**Part type** Roller conveyor inserts

**Colour** black

**Lean system type** D28 steel kit system, D30 Aluminium i kit system, D28 Aluminium B kit system

**ESD discharging** Yes

## More images

