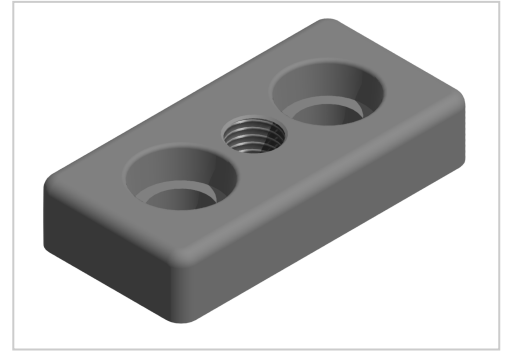


Base Plate 40x80 M12, plain-10

Fußplatte 40x80 M12, natur-10 kaufen ☐ Jetzt sparen in unserem Onlineshop ☐ !

Product number ZB-3275

Weight 0.188kg



Product description

For attaching adjusting feet, rollers, ring screws, etc., to the front side of the profiles. The base plate can also be screwed to the groove side with groove stones.

Product properties

Compatible with	Bosch
Part type	Base plates
Modular dimension	Modular dimension 40
Series	Series 40-10
Colour	natural
Size	80x40 mm
Thread	M12

More images

