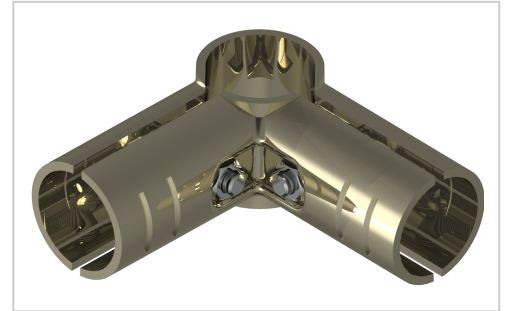


## Basic connector set as corner form | ESD

Grundverbinderset als Eckform, vernickelt kaufen ? Jetzt sparen in unserem Onlineshop ?!

**Product number** GA-2S-NI

**Weight** 0.237kg



### Product description

Clamp connector set made of steel for the assembly of stable pipe push-in clamp connections.

### Product properties

<b>Compatible with</b>	Beewatec
<b>Series</b>	S- LPS Lean Production
<b>Part type</b>	Connector
<b>Lean system type</b>	D28 steel kit system
<b>Connector type</b>	Basic connector

## More images

