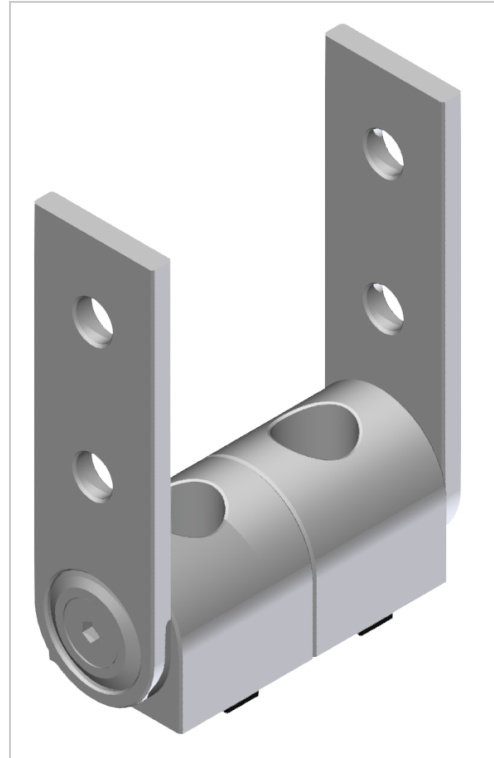


Pivot Joint 20x40, white aluminium-6

Product number VB-1065

Weight 0.045kg



Product description

Support arm joints are suitable for connecting profiles in a free angle. They can also be used as heavy hinges. The joints are freely movable. Tightening the clamping screws creates a rigid angle element. The fixings enable a twist-proof attachment to the profile groove.

Product properties

Part type	Joints
Series	Series 6
Size	20x40 mm
Connector type	Hinges
Colour	white aluminium

More images

