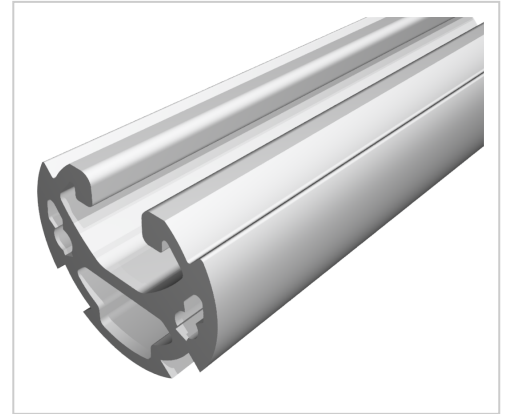


Profile Tube 8 D30, natural | Cut length

Profilrohr 8 D30, natur kaufen ? – 0.0.663.94 kompatibel mit Aluprofilen. Jetzt sparen in unserem Onlineshop ?!

Product number PL-1120 SZ

Weight 7.326kg



Product description

Round tube with clamping grooves and additional groove 8 made of aluminium .

Product properties

Material	Al Mg Si 0.5 F25, artificially aged
Anodised	E6EV1 10-15 µm silver
Tolerances	EN 12020-2
Compatible with	item
Series	i- LPS Lean Production
Profile length	Cut length
Delivery unit	Cuts
Lean system type	D30 Aluminium i kit system

More images

