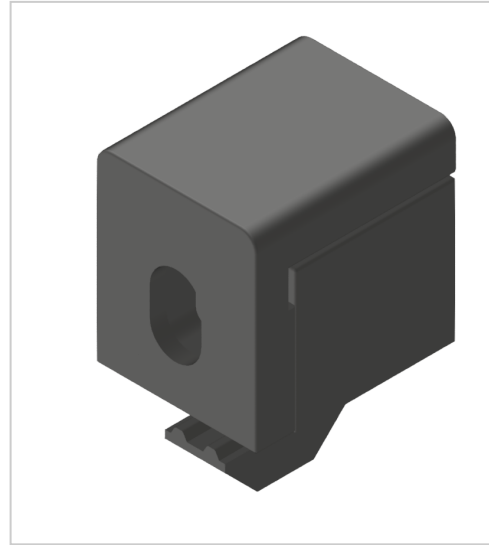


# Multi Block PA, black-10

**Product number** ZB-3140

**Weight** 0.013kg



## Product description

Multi blocks enable safe and stable attachment of various Fächenelemente of constructions. These are subsequently used in assemblies. By turning into the profile the position can be freely selected. By umsteck- and rotatable spacer bodies of different material thicknesses can be used.

## Product properties

<b>Compatible with</b>	Bosch
<b>Colour</b>	black
<b>Series</b>	Series 60-10, Series 45-10, Series 50-10, Series 40-10
<b>Part type</b>	Multi block

## More images

