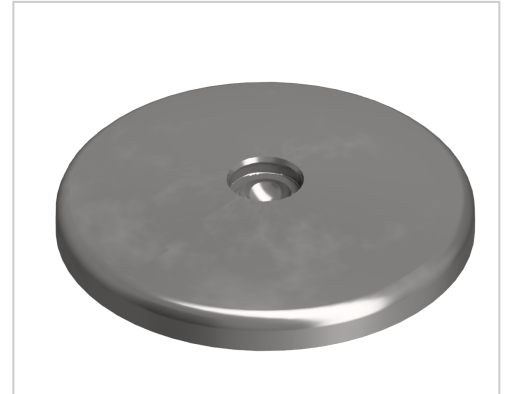


Base A D120, stainless

Teller A D120, Edelstahl kaufen [☐](#) Jetzt sparen in unserem Onlineshop [☐](#) !

Product number ZB-3224

Weight 0.844kg



Product description

The combination of a threaded rod and a base plate results in a complete base. Adjusting feet serve as a stepless height and level equalization of assemblies and reeds of any kind. The inclination of the plate is variable. Optionally, a rubber insert can be installed.

Product properties

| | |
|-------------------------------|--|
| Compatible with | Bosch |
| Part type | levelling feet |
| Series | Series 60-10, Series 45-10, Series 50-10, Series 40-10, Series 30 8, Series 20-6 |
| Base for swivel feet Ø | 120 mm |
| Type | A |
| Execution | stainless steel |

More images

