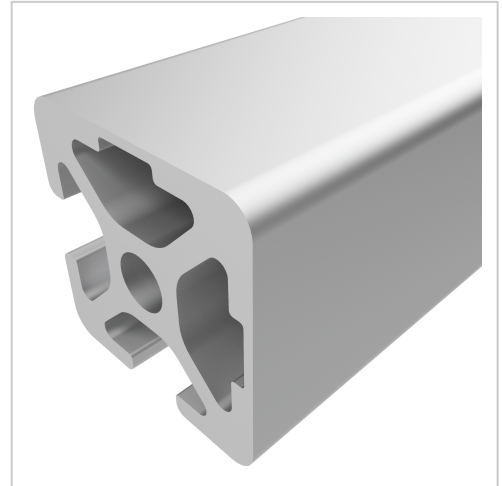


## Profile 5 20x20 2N90, natural | Cut length

<b>Product number</b>	PI-4036 SZ
<b>Weight</b>	0.486kg
<b>Length</b>	6000mm



### Product description

The compact design of Profiles 5 makes them particularly suitable for small and weight-optimised assemblies. The grooves and core holes of Profiles 5 are designed for M5 screws.

Cut to size max. 6000 mm

### Product properties

<b>Compatible with</b>	item
<b>Nutauszugskraft</b>	F=500 N
<b>Breite Profil</b>	20 mm
<b>Höhe Profil</b>	20 mm
<b>Profile length</b>	Cut length
<b>Contour</b>	Square
<b>Delivery unit</b>	Cuts
<b>Series</b>	Series 5
<b>Size</b>	20x20 mm
<b>Colour</b>	natural
<b>Execution</b>	heavy
<b>Groove shape</b>	2 sides closed 90°

## More images

