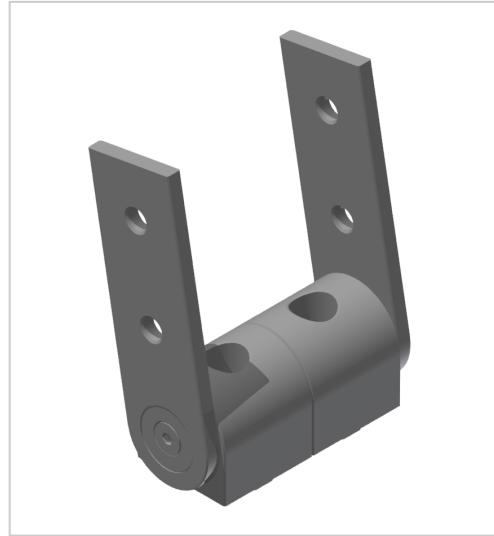


Pivot Joint 40x80, white aluminium-10

Product number VB-3265

Weight 0.358kg



Product description

Support arm joints are suitable for connecting profiles in a free angle. They can also be used as heavy hinges. The joints are freely movable. Tightening the clamping screws creates a rigid angle element. The fixings enable a twist-proof attachment to the profile groove.

Product properties

| | |
|--------------------------|----------------------|
| Compatible with | Bosch |
| Part type | Joints |
| Modular dimension | Modular dimension 40 |
| Connector type | Hinges |
| Colour | white aluminium |
| Series | Series 40-10 |
| Size | 80x40 mm |

More images

