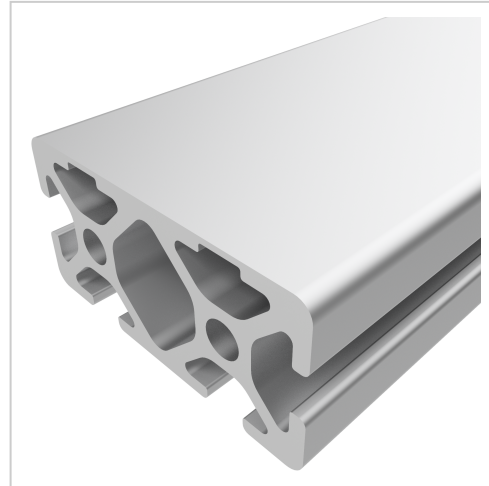


Profile 5 40x20 2N, natural

Product number PI-4146 SN6000
Weight 5.508kg
Length 6000mm



Product description

The compact design of Profiles 5 with closed grooves makes them particularly suitable for small and weight-optimised assemblies. With the closed groove side, visually appealing and low-maintenance constructions can be realised. The grooves and core holes of Profiles 5 are designed for M5 screws.

Delivery length 6030 mm

Product properties

| | |
|------------------------|-------------------------------------|
| Material | Al Mg Si 0.5 F25, artificially aged |
| Anodised | E6EV1 10-15 µm silver |
| Tolerances | EN 12020-2 |
| Nutauszugskraft | F=500 N |
| Groove shape | 1 side closed |
| Delivery unit | Rods |
| Size | 40x20 mm |
| Profile length | 6000 mm bar |
| Contour | Rectangular |
| Series | Series 5 |
| Colour | natural |
| Execution | heavy |

More images

