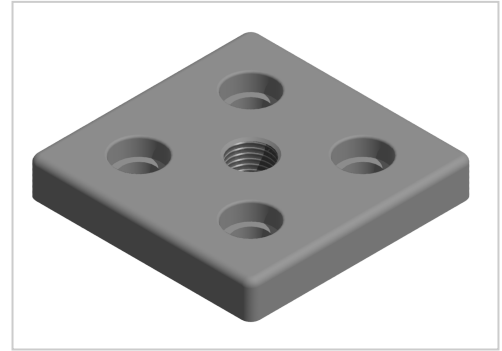


Base Plate 100x100 M20-10 | natural

Fußplatte 100x100 M20, natur-10 kaufen ? Jetzt sparen in unserem Onlineshop ?!

Product number ZB-3440-N

Weight 0.521kg



Product description

For attaching adjusting feet, rollers, ring screws, etc., to the front side of the profiles. The base plate can also be screwed to the groove side with groove stones.

Product properties

Compatible with	Bosch
Part type	Base plates
Size	100x100 mm
Thread	M20
Series	Series 50-10
Modular dimension	Modular dimension 50

More images

