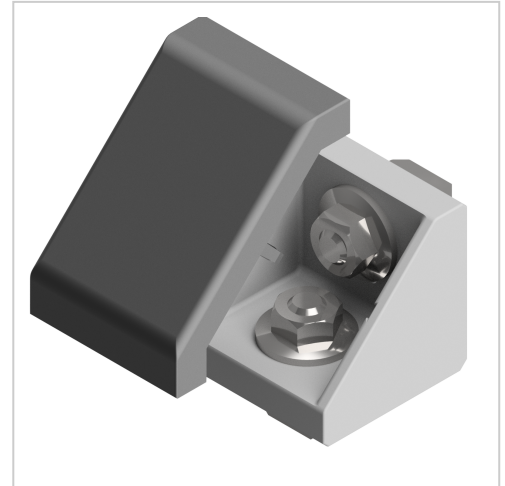


Angle Bracket Set 45x45 - 10 | white aluminium

Winkelsatz 45x45, weißaluminium-10 kaufen ☐ - 3 842 551 606 kompatibel mit Bosch-Geräten. Jetzt sparen in unserem Onlineshop ☐ !

Product number ZB-3095-W

Weight 0.112kg



Product description

Angles are a force-fit and processing wireless connection. These are also used as additional reinforcement of connections and as a fastener for attachments. Integral safety devices for fixing the profile are available. These are removed if necessary.

Product properties

Profile processing	without profile machining
Compatible with	Bosch
Part type	Bracket
suitable connector	Matching connector B10 45, Matching connector B10 45 90, Matching connector B10 45 90x90, Matching connector B10 45 light, Matching connector B10 45 90 light
Verbindungsart	Rechtwinkelig
Series	Series 45-10
Angle bracket type	Angle bracket AI
Modular dimension	Modular dimension 45
Size	45x45 mm

More images

