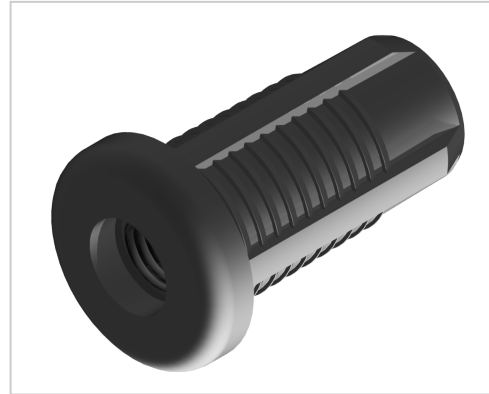


Threaded Sleeve M8 Set D28

Product number ZL-1295

Weight 0.08kg



Product description

For attaching adjustable feet and swivel castors to the end face of round tube profiles D28 with outer diameter \varnothing 28

Product properties

Compatible with	Bosch
Part type	Threaded inserts profile tube
Series	B- LPS Lean Production
Material	PA-GF
Lean system type	D28 Aluminium B kit system

More images

