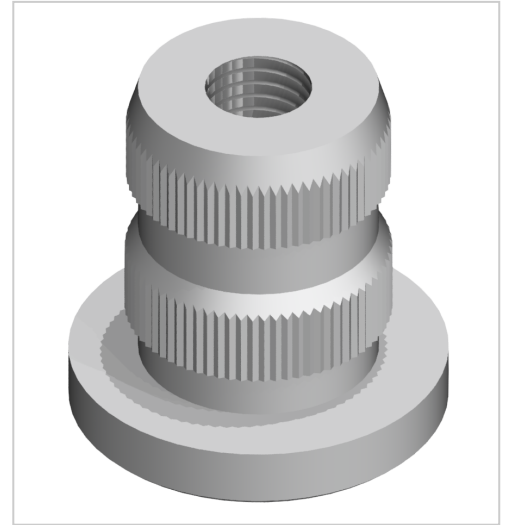


# Threaded Insert, Profile Tube D30 M10 Al, natural

Gewindeeinsatz Profilrohr D30 M10 Al, natur kaufen ? – 0.0.675.18 kompatibel mit Aluprofilen. Jetzt sparen in unserem Onlineshop ?!

**Product number** ZL-1904

**Weight** 0.029kg



## Product description

The threaded plug is inserted into the front of the tube.  
Adjustable feet can then be attached.  
Compatible with item 0.0.675.17

## Product properties

<b>Compatible with</b>	item
<b>Series</b>	i- LPS Lean Production
<b>Part type</b>	Threaded inserts profile tube
<b>Colour</b>	Alu natural
<b>Material</b>	GD-Al, natur
<b>Lean system type</b>	D30 Aluminium i kit system

## More images

