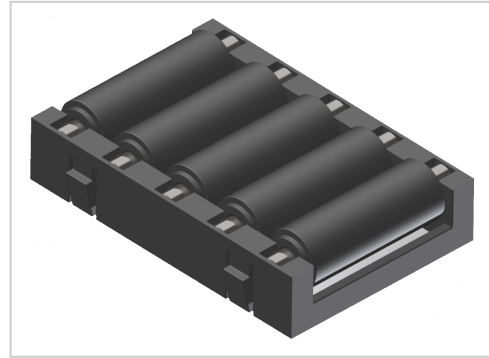


Roller Unit R9 | black/black ESD

Product number ZL-1095-S ESD



Product description

Roller insert R9 with 5x cylindrical rollers d 9 mm suitable for roller rail 40x40.
The roller spacing of 10 mm prevents workpieces or containers from dipping into the roller gap.
Thanks to the reduced point load, it is suitable for soft cardboard boxes.

Product properties

Compatible with	item , Bosch
Series	i- LPS Lean Production, B- LPS Lean Production
Part type	Roller conveyor inserts
Lean system type	D28 steel kit system, D30 Aluminium i kit system, D28 Aluminium B kit system
ESD discharging	Yes

More images

