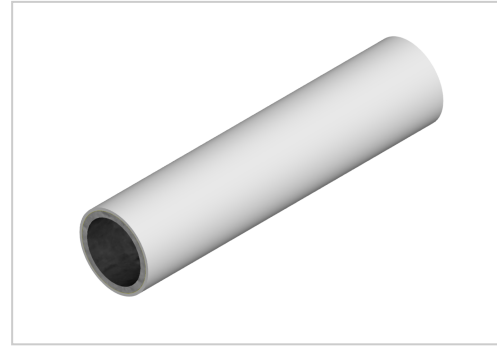


M-Tube 2 mm grey | Cut length

M-Rohr 2 mm grau kaufen Jetzt sparen in unserem Onlineshop !

Product number PL-2072 SZ

Weight 0.697kg



Product description

The M-tube with a wall thickness of 2 mm is used in conjunction with our connectors to build specific solutions such as workstations, transport trolleys, shelving systems.

Due to the 2 mm wall thickness, stability has a name.

With this stable wall you can solve even the most difficult problems in your production...

Our M-tubes are characterised by quality and stability.

The following features are due to the structure of the M-pipe.

Inner coating as corrosion protection.

Stable steel core.

Full-surface adhesive layer.

Full-surface synthetic resin layer.

This quality in the pipe structure leads to the positive properties such as

Heat resistance 100°C.

Cold resistance -20°C.

Highly resistant to oil and chemicals.

Product properties

Compatible with Beewatec

Series S- LPS Lean Production

Colour grey

Lean system type D28 steel kit system

Delivery unit Cuts

More images

