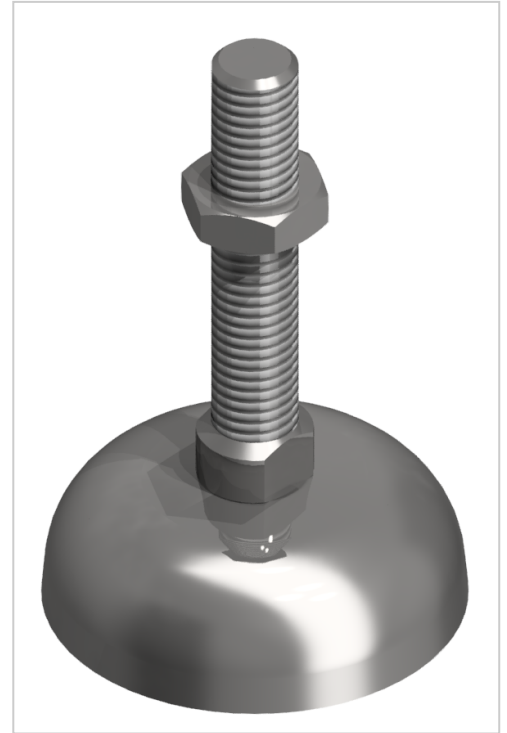


Knuckle Foot ST D60 M12x88, bright zinc-plated

Product number ZB-3170

Weight 0.186kg



Product description

Leveling feet serve as any type stepless height and level adjustment of modules and racks. The tilt of the plate is variable. Optionally, a rubber insert can be installed.

Product properties

Compatible with	Bosch
Part type	levelling feet
Series	Series 60-10, Series 45-10, Series 50-10, Series 40-10, Series 30 8, Series 20-6
Material	Galvanized steel
Thread	M12
Base for swivel feet Ø	60 mm
Total height	88 mm

More images

