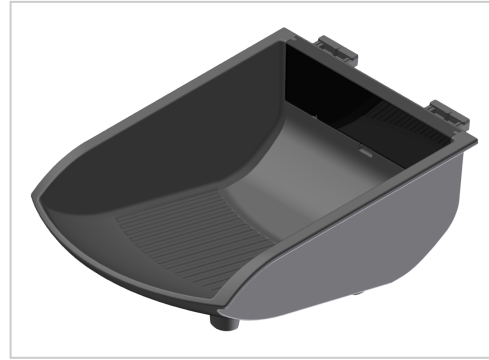


Grab Tray 105x130, black-8

Product number ZI-1399-S

Weight 0.071kg



Product description

Gripping trays enable the provision of stocked small parts Assembly is done by simply swinging them into the profile groove. The trays can also be additionally secured using M5 screws.
Compatible with item 0.0.699.40

Product properties

Series Workstation systems, Series 8

Compatible with item

Part type Gripper shells

Colour black

More images

