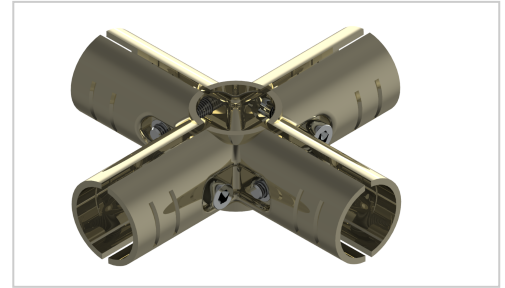


Basic connector set as corner form 4 | ESD

Grundverbinderset als Eckform 4, vernickelt kaufen ? Jetzt sparen in unserem Onlineshop ?!

Product number GA-5S-NI

Weight 0.424kg



Product description

Clamp connector set made of steel for the assembly of stable pipe push-in clamp connections.

Product properties

Compatible with	Beewatec
Series	S- LPS Lean Production
Part type	Connector
Lean system type	D28 steel kit system
Connector type	Basic connector

More images

