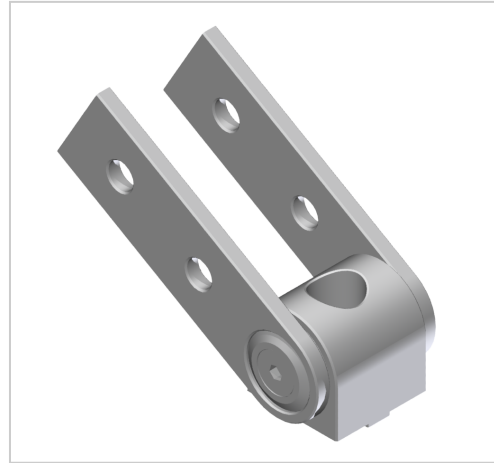


Pivot Joint 20x20, white aluminium-6

Product number VB-1061

Weight 0.032kg



Product description

Support arm joints are suitable for connecting profiles in a free angle. They can also be used as heavy hinges. The joints are freely movable. Tightening the clamping screws creates a rigid angle element. The fixings enable a twist-proof attachment to the profile groove.

Product properties

| | |
|-----------------------|-----------------|
| Part type | Joints |
| Series | Series 6 |
| Connector type | Hinges |
| Colour | white aluminium |

More images

