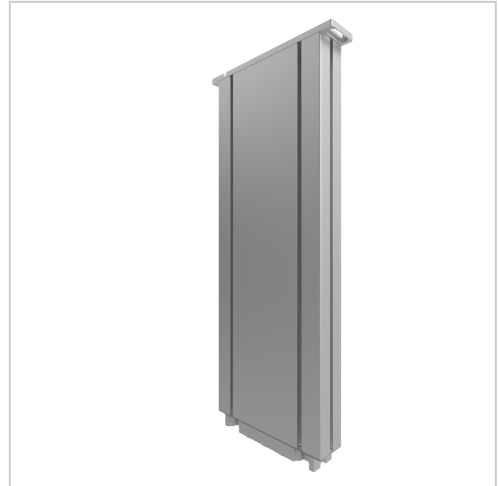


# Telescopic lifting column EL500-2000-9

Teleskophubsäule EL500-2000-9 kaufen ? Jetzt sparen in unserem Onlineshop ?!

**Product number** 1013870

**Weight** 11.7kg



## Product description

**Discover the EL500-2000-9 Telescopic Lifting Column – The Ideal Solution for Precise and Reliable Height Adjustments**

Whether in **industrial applications**, the **medical sector**, or **ergonomic workstations**, this lifting column offers **maximum flexibility and performance**.

### Key Features:

- ? **High Load Capacity:** With an impressive lifting force of **up to 500 kg**, the EL500-2000-9 is perfect for **heavy loads and demanding applications**.
- ? **Precise Height Adjustment:** A **500 mm stroke range** enables **precise height adaptation**, promoting **ergonomic working conditions** and boosting **productivity**.
- ? **Robust Construction:** Made from **high-quality materials**, ensuring **durability and stability**, even with intensive use.
- ? **Easy Integration:** The **thoughtfully designed** structure allows for seamless **integration** into **existing systems and applications**.
- ? **Quiet Operation:** **Advanced drive technology** ensures **smooth and silent height adjustment**, enhancing **user comfort**.

### Competitive Advantage:

Compared to similar competitor products, the **EL500-2000-9** offers **equal or even superior performance** at a **more attractive price**. With its **high load capacity** and **extended stroke range**, it provides **greater flexibility and efficiency** in various applications.

### Optimize Your Work Processes

Enhance efficiency with the **EL500-2000-9 telescopic lifting column** – a **cost-effective solution** that delivers **uncompromising quality and functionality**.

## Product properties

<b>Series</b>	Workstation systems
<b>Part type</b>	Telescopic lifting columns
<b>Connection cable</b>	2000 mm pluggable with connector Molex Mini Fit jr.
<b>Stroke</b>	500 mm
<b>Nominal force</b>	2000 N
<b>Lifting speed</b>	9 mm/s
<b>Installation dimension</b>	680 mm

## More images

