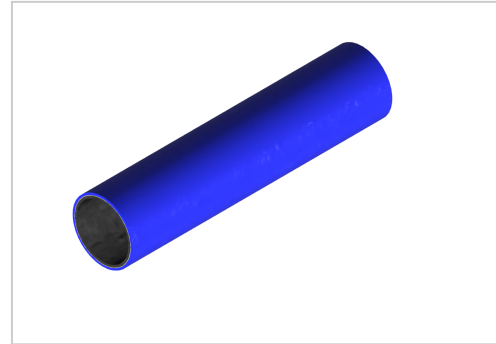


M-Tube 1 mm blue | Cut length

M-Rohr 1 mm blau kaufen [👉](#) Jetzt sparen in unserem Onlineshop [👉](#) !

Product number PL-2021 SZ

Weight 0.697kg



Product description

The M-tube with a wall thickness of 1 mm is used in conjunction with our connectors to build specific solutions such as workstations, transport trolleys, shelving systems.

Due to the 2 mm wall thickness, stability has a name.

With this stable wall you can solve even the most difficult problems in your production...

Our M-tubes are characterised by quality and stability.

The following features are due to the structure of the M-pipe.

Inner coating as corrosion protection.

Stable steel core.

Full-surface adhesive layer.

Full-surface synthetic resin layer.

This quality in the pipe structure leads to the positive properties such as

Heat resistance 100°C.

Cold resistance -20°C.

Highly resistant to oil and chemicals.

Product properties

Compatible with	Beewatec
Series	S- LPS Lean Production
Part type	Tubes D28 steel
Profile length	Cut length
Colour	blue
Lean system type	D28 steel kit system
Delivery unit	Cuts

More images

