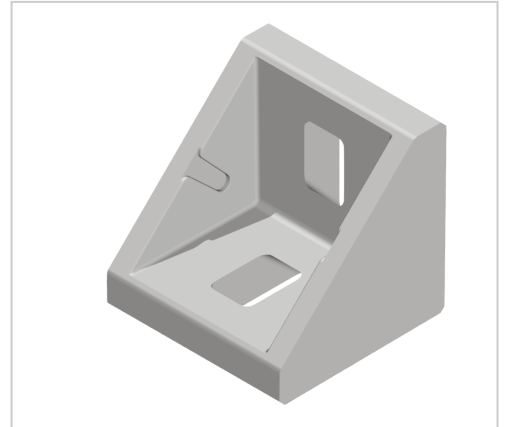


Angle Bracket 30x30 - 8 | white aluminium

Product number ZB-2050-W

Weight 0.021kg



Product description

Angles are a force-fit and processing wireless connection. These are also used as additional reinforcement of connections and as a fastener for attachments. Integral safety devices for fixing the profile are available. These are removed if necessary.

Product properties

Profile processing	without profile machining
Compatible with	Bosch
Part type	Bracket
Size	30x30 mm
Angle bracket type	Angle bracket AI
Series	Series 30 8

More images

