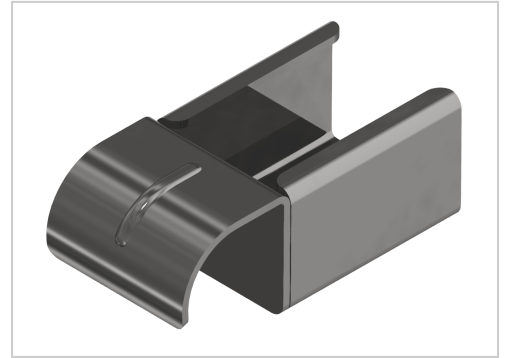


Roller rail support round central 35-D28 St

Product number M-030-VZ

Weight 0.13kg



Product description

The stairs between two roller conveyors when the slope changes.
The connection remains adjustable should the slope be adjusted later.
be adjusted at a later date.

Product properties

Compatible with Bosch, Beewatec
Series B- LPS Lean Production, S- LPS Lean Production
Part type Roller conveyor holder
Lean system type D28 steel kit system, D28 Aluminium B kit system

More images

