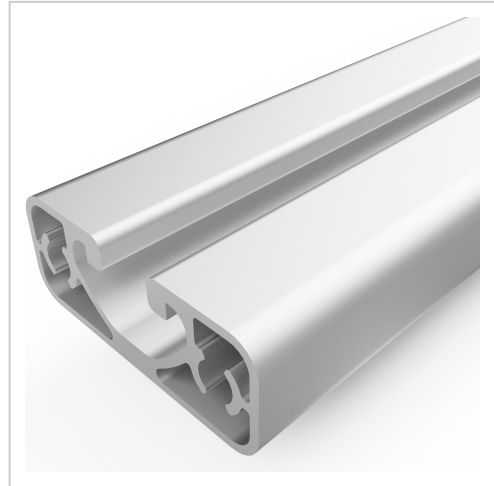


Profile 10 50x20 E, natural | Cut length

Product number PI-7010 SZ

Weight 0.992kg



Product description

The profiles 10 E are suitable for weight-optimized assemblies of all kinds. Due to the different profile geometries, the material requirements can be adapted to the application. The grooves and the core holes of the profiles 10 E are designed for M10 screws.

Cut to size max. 6000 mm

Product properties

Material	Al Mg Si 0.5 F25, artificially aged
Anodised	E6EV1 10-15 µm silver
Tolerances	EN 12020-2
Compatible with	item
Nutauszugskraft	F=3.500 N
Breite Profil	50 mm
Höhe Profil	20 mm
Groove shape	Open grooves
Profile length	Cut length
Delivery unit	Cuts
Series	Series 10
Contour	Rectangular
Colour	natural
Execution	economy
Size	50x20 mm

More images

