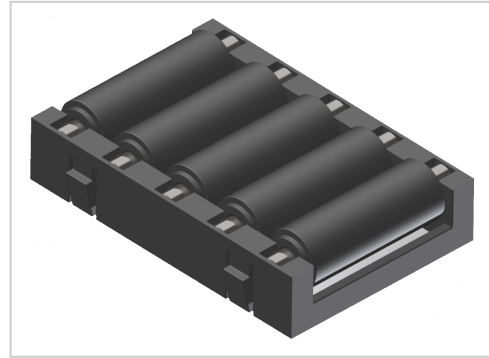


Roller Unit R9 | black/black

Product number ZL-1095-S



Product description

Roller insert R9 with 5x cylindrical rollers d 9 mm suitable for roller rail 40x40.

The roller spacing of 10 mm prevents workpieces or containers from dipping into the roller gap.

Thanks to the reduced point load, it is suitable for soft cardboard boxes.

Product properties

Compatible with item , Bosch

Series i- LPS Lean Production, B- LPS Lean Production

Part type Roller conveyor inserts

Lean system type D28 steel kit system, D30 Aluminium i kit system, D28 Aluminium B kit system

ESD discharging Yes

More images

