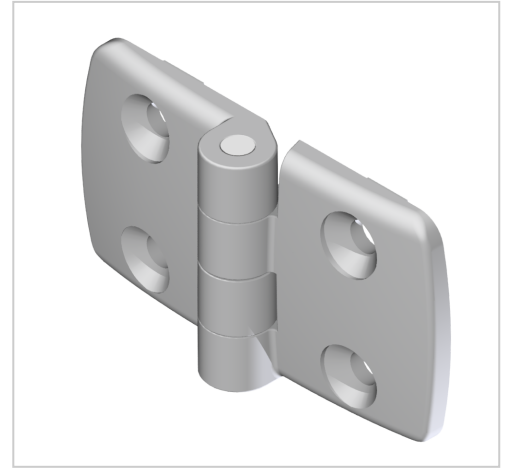


Alu Combi Hinge non detachable 45x45 Al, white aluminium-10

Kombischarnier fest 45x45 Al, weißaluminium-10 kaufen ☐ Jetzt sparen in unserem Onlineshop ☐ !

Product number ZB-3068

Weight 0.073kg



Product description

Hinges Al are suitable for heavy doors and flaps. Fächenelemente which are installed directly hinged PA must be machined with holes.

Product properties

Compatible with	Bosch
Part type	Hinges
Material	Al
Series	Series 45-10
Hinge Type	Combi hinge non detaschable, Hinge Al
Colour	white aluminium
Size	45x45 mm

More images

