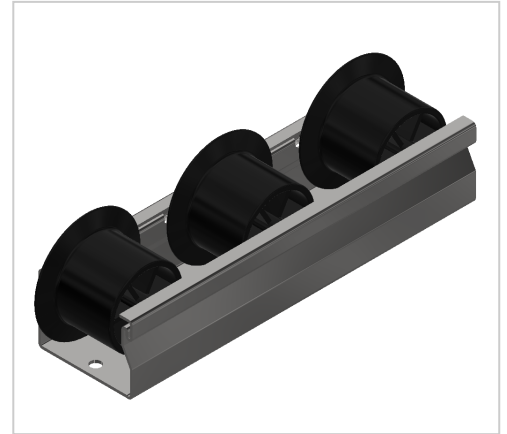


Roller Conveyor St D30 ESD with Flanged Wheel, black

Product number ZL-9020 SN4500
Weight 3.929kg
Length 4500mm



Product description

Delivery length 4500 mm
Perfect for your lean shelving: smooth-running roller conveyors with steel axles for an extra long service life.

Product properties

Compatible with item , Bosch
Series i- LPS Lean Production, B- LPS Lean Production
Part type Roller tracks St
Colour black
Profile length 4500 mm
Delivery unit Rods
ESD discharging Yes
Material Galvanized steel
Lean system type D30 Aluminium i kit system

More images

