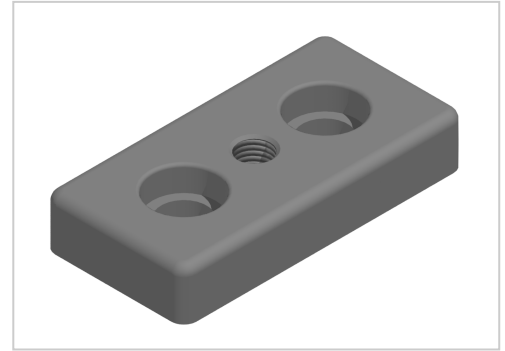


# Base Plate 45x90 M12-10 | natural

Fußplatte 45x90 M12, natur-10 kaufen ☐☐ Jetzt sparen in unserem Onlineshop ☐ !

**Product number** ZB-3320-N

**Weight** 0.255kg



## Product description

For attaching adjusting feet, rollers, ring screws, etc., to the front side of the profiles. The base plate can also be screwed to the groove side with groove stones.

## Product properties

<b>Compatible with</b>	Bosch
<b>Series</b>	Series 45-10
<b>Size</b>	45x90 mm
<b>Thread</b>	M12
<b>Modular dimension</b>	Modular dimension 45

## More images

