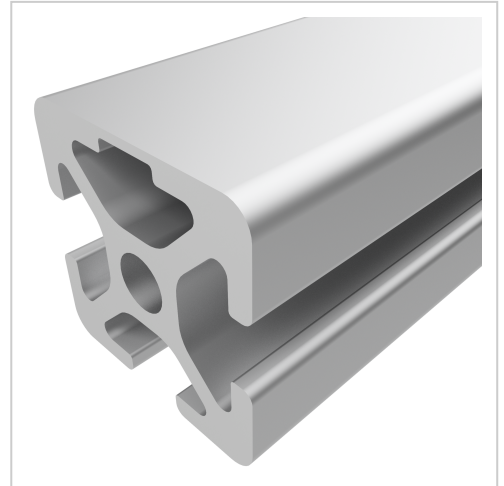


# Profile 5 20x20 1N, natural | 3000 mm bar

**Product number** PI-4032 SN3000  
**Weight** 1.527kg  
**Length** 3000mm



## Product description

The compact design of Profiles 5 with closed grooves makes them particularly suitable for small and weight-optimised assemblies. With the closed groove side, visually appealing and low-maintenance constructions can be realised. The grooves and core holes of Profiles 5 are designed for M5 screws.

Delivery length 3000 mm

## Product properties

|                        |                                     |
|------------------------|-------------------------------------|
| <b>Material</b>        | Al Mg Si 0.5 F25, artificially aged |
| <b>Anodised</b>        | E6EV1 10-15 µm silver               |
| <b>Tolerances</b>      | EN 12020-2                          |
| <b>Compatible with</b> | item                                |
| <b>Nutauszugskraft</b> | F=500 N                             |
| <b>Breite Profil</b>   | 20 mm                               |
| <b>Höhe Profil</b>     | 20 mm                               |
| <b>Groove shape</b>    | 1 side closed                       |
| <b>Delivery unit</b>   | Rods                                |
| <b>Contour</b>         | Square                              |
| <b>Series</b>          | Series 5                            |
| <b>Size</b>            | 20x20 mm                            |
| <b>Profile length</b>  | 3000 mm bar                         |
| <b>Colour</b>          | natural                             |
| <b>Execution</b>       | heavy                               |

## More images

