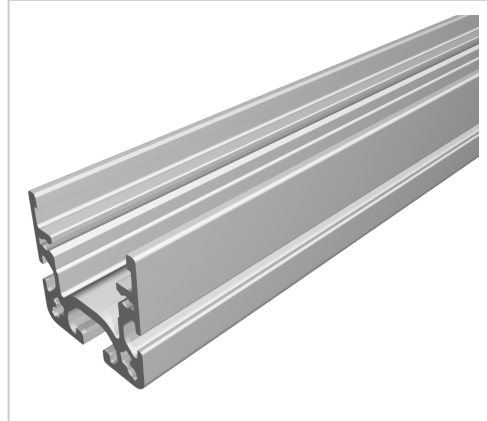


Castor Rail 40x40 I, natural

Product number PL-1090 SN6000

Length 6000mm



Product description

The roller track 40x40 D28 is our specialist for complex transport solutions. The 40x40 roller track forms the basis. It is equipped with roller, ball transfer roller, brush or glide inserts. The various inserts can also be retrofitted as required by simply by simply snapping them into place

Product properties

Material	Al Mg Si 0.5 F25, artificially aged
Anodised	E6EV1 10-15 µm silver
Tolerances	EN 12020-2
Compatible with	item
Series	i- LPS Lean Production
Part type	Roller conveyor profile
Delivery unit	Rods
Colour	natural
Lean system type	D30 Aluminium i kit system

More images

